



Turnkey USB Link driver installation instructions

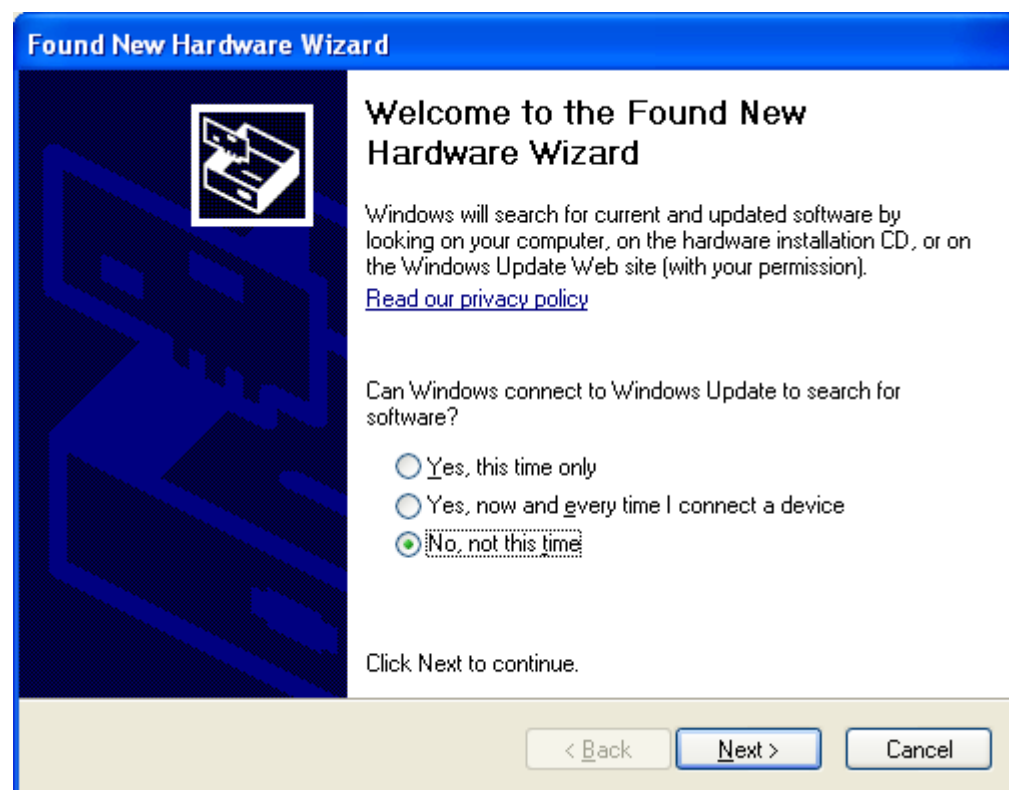
Turnkey Software – AirQ, WinSim & Brake for Windows

Please ensure you have the latest version of Turnkey software by visiting our website, links to all the latest downloads can be found on the support page.

Installing the Drivers


Connect the Turnkey USB Link to any free USB Port on your computer and follow the screenshots below depending on your version of Windows. The drivers are available on CD, floppy disk or from our website (please see the support pages).

Windows XP






Found New Hardware Wizard



This wizard helps you install software for:

Turnkey USB Link

 **If your hardware came with an installation CD or floppy disk, insert it now.**

What do you want the wizard to do?

☐ Install the software automatically (Recommended)

☒ Install from a list or specific location (Advanced)


Click Next to continue.

< Back Next > Cancel

If downloaded from the website please Browse to the location where you saved the drivers on your computer, otherwise tick the search removable media option and ensure either disc is in the drive.

Found New Hardware Wizard

Please choose your search and installation options.



☒ Search for the best driver in these locations.

Use the check boxes below to limit or expand the default search, which includes local paths and removable media. The best driver found will be installed.

☐ Search removable media (floppy, CD-ROM...)

☒ Include this location in the search:

E:\My Documents\Tech Support\USB PC Link\Driv Browse

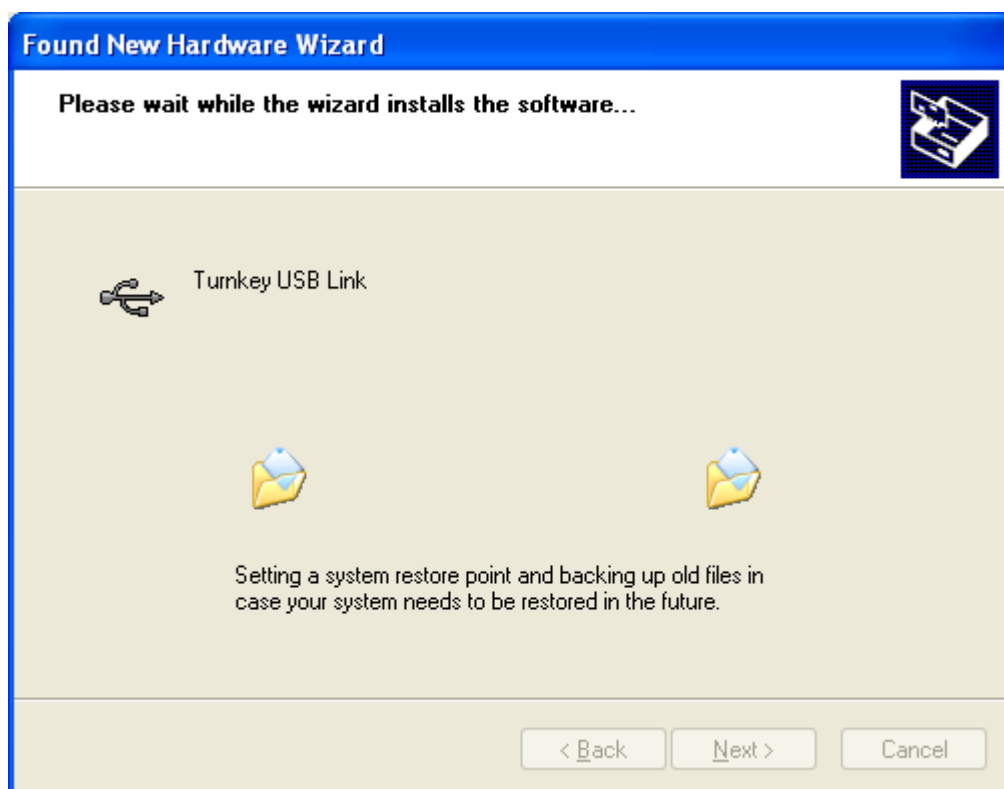
☐ Don't search. I will choose the driver to install.

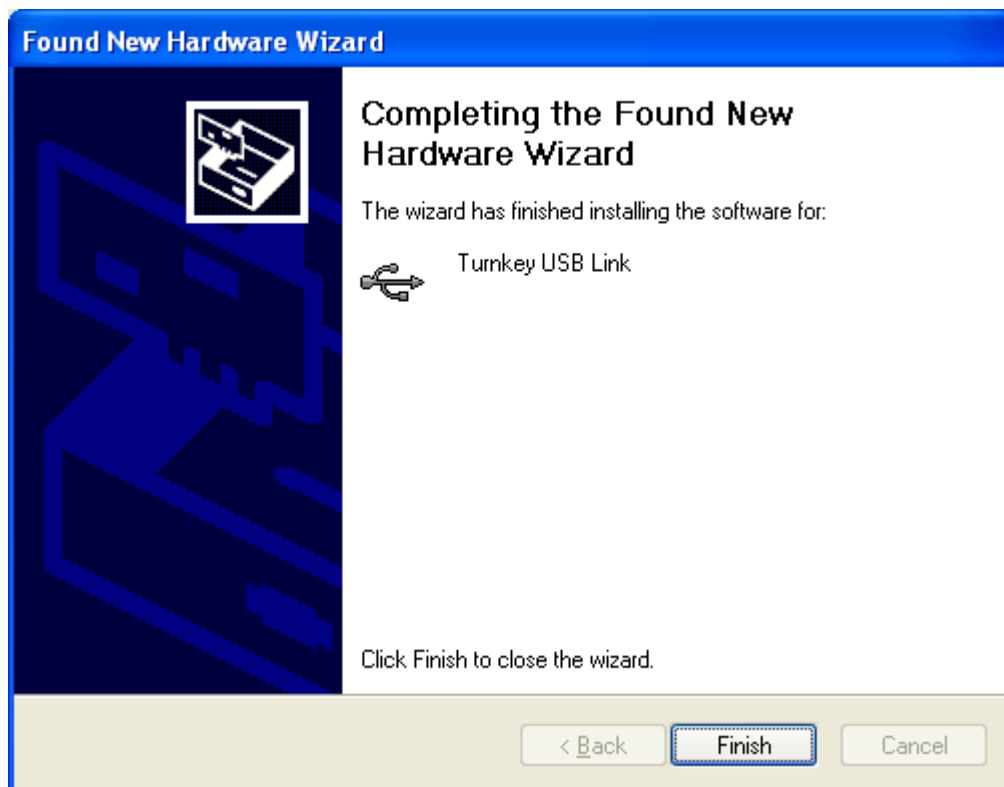
Choose this option to select the device driver from a list. Windows does not guarantee that the driver you choose will be the best match for your hardware.

< Back Next > Cancel

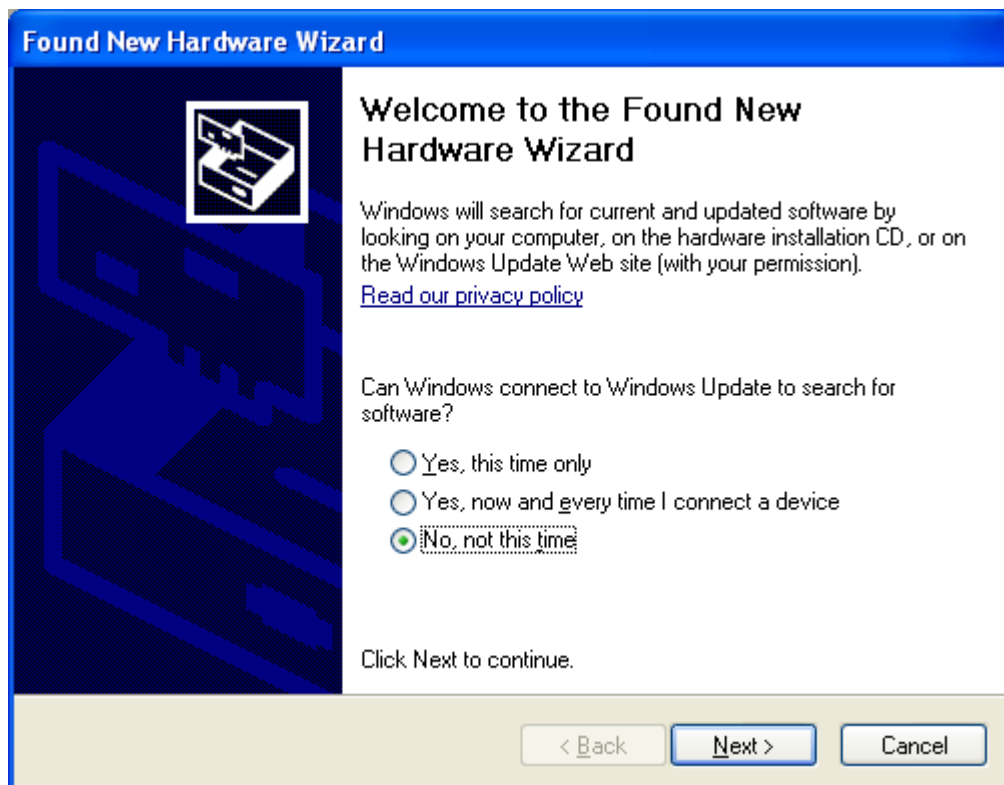


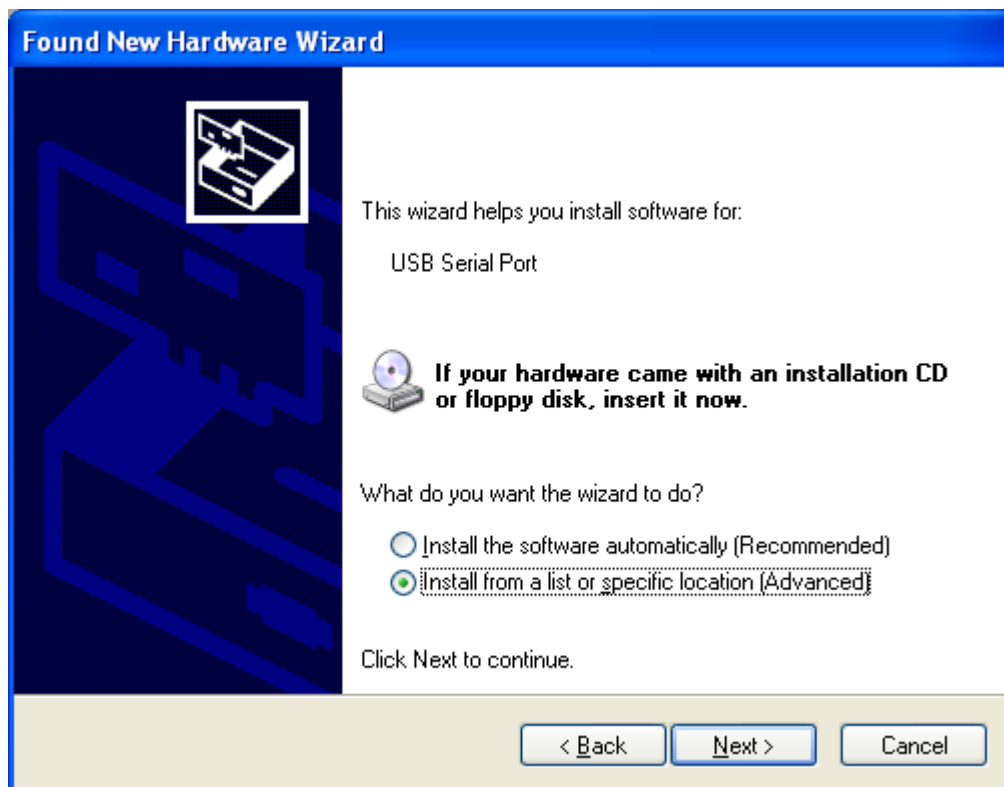
Select **Continue Anyway** at this point



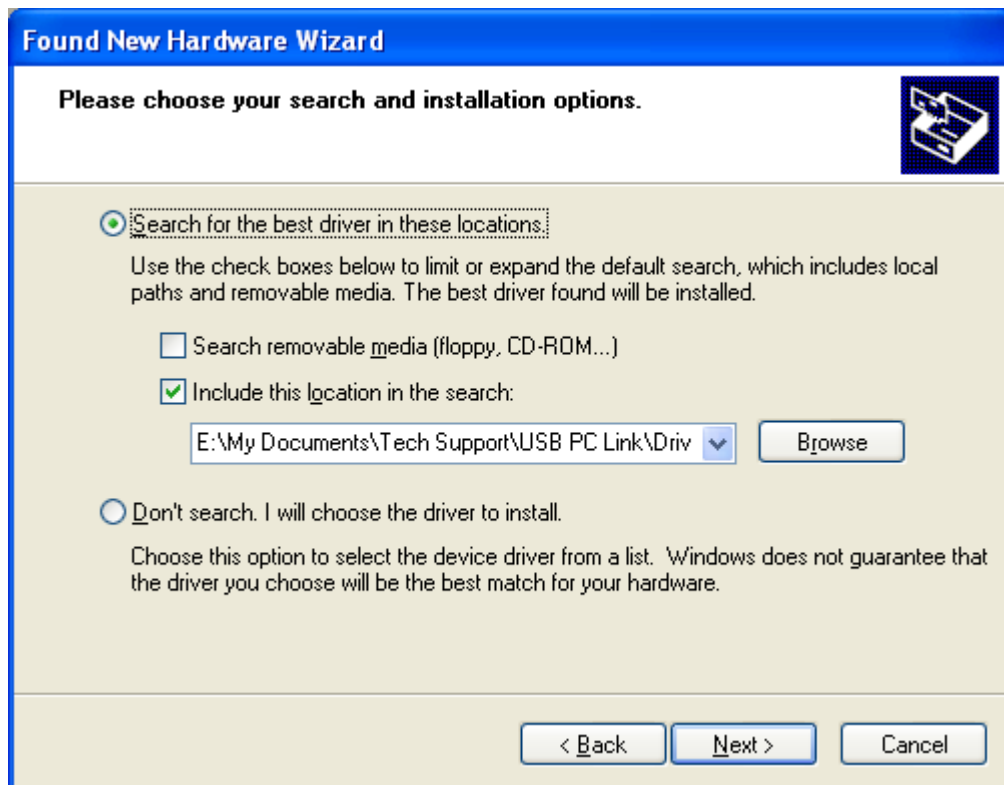


Windows will now identify the USB serial port option of the Turnkey USB Link, please continue as below.



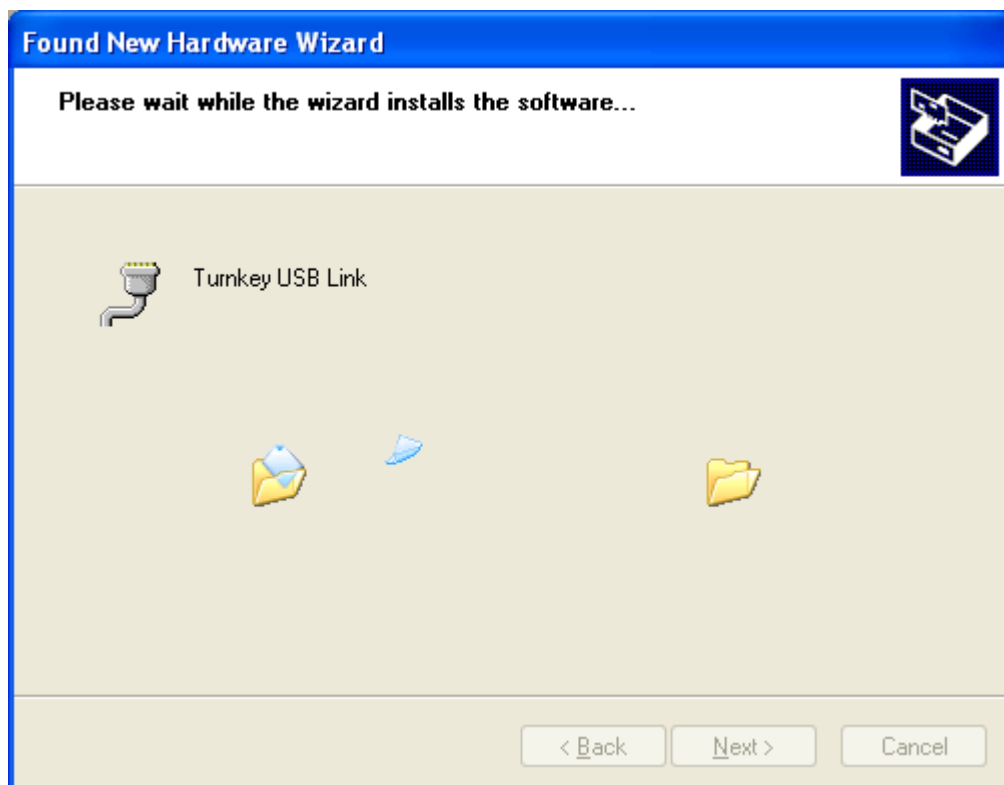


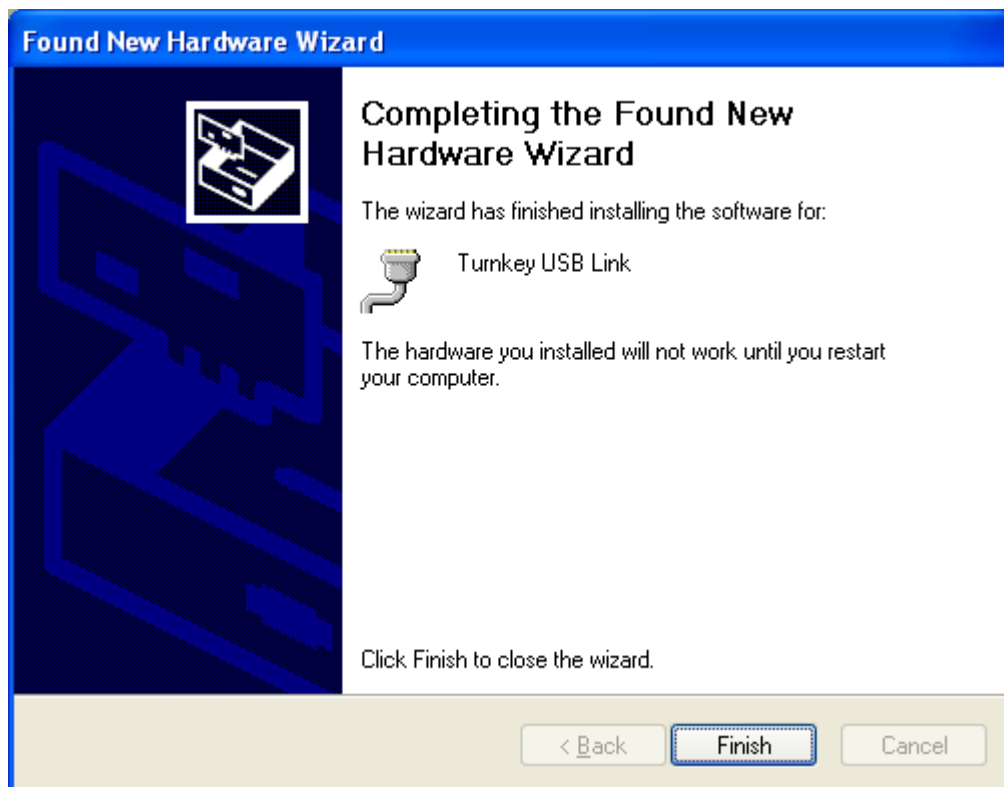
If downloaded from the website please Browse to the location where you saved the drivers on your computer, otherwise tick the search removable media option and ensure either disc is in the drive.



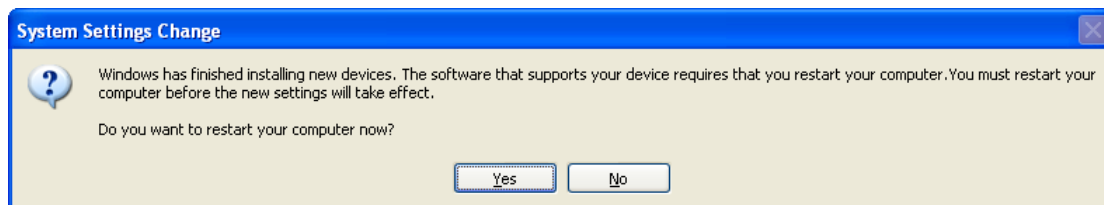


Select **Continue Anyway** at this point





The computer may now require a reboot as shown below.





Windows 98



If downloaded from the website please Browse to the location where you saved the drivers on your computer, otherwise tick the search removable media option and ensure either disc is in the drive.



Add New Hardware Wizard

Windows will search for new drivers in its driver database on your hard drive, and in any of the following selected locations. Click Next to start the search.

☐ Floppy disk drives

☐ CD-ROM drive

☐ Microsoft Windows Update

☒ Specify a location:

C:\WINDOWS\Desktop\Turnkey USB

Browse...

< Back Next > Cancel

Add New Hardware Wizard

Windows driver file search for the device:

Turnkey USB Link

Windows is now ready to install the best driver for this device. Click Back to select a different driver, or click Next to continue.

Location of driver:

 C:\WINDOWS\DESKTOP\TURNKE~1\FTDI

< Back Next > Cancel

